

# On The Disk...

## A run-down of what's included on the free disk with this issue

Collated and tested by Mike Orriss (mjo@3kcc.co.uk)

The headings below reflect the directories on the disk where you will find all these goodies! The appearance of (s) indicates that full source code is included.

### ➤ RSPFIND: Threaded file find

Resplendent File Find is a 32-bit component that allows searching of specified drives, paths and/or files for a text string using a separate thread. The zip file contains a trial version suitable for Delphi 3 and/or C++Builder.

### ➤ CHNG: Folder changes

This is a useful demo of the TChangeMonitor component, which watches Windows 95's special folders and files. An event is fired when changes occur in those you select, out of the following folders: Desktop, Fonts, Network Neighbourhood, Personal, Programs, Recent Documents, Send To, Start Menu, Startup Templates or Favourites. Although the readme.txt says the component is for Win95 only, it works OK for me under NT4.

### ➤ DBVEDIT: Enhanced edits

TDBVidEdit is an alternative for the TDBEdit component with these enhancements: maintaining focus and caret after showing messages, instant trapping of required fields, suspending validation on special events, filling of default values on creating new records, MaskEdit capabilities and alert beep controllable.

### ➤ ICONCTLS: Display icons

This file contains two components: a dropdown list style combobox (TIconComboBox) that displays the icons that exist in a given file, and a TIconListBox that displays them horizontally and/or vertically.

### ➤ FNGB2301 (s): Mouse trap

TFnugryMouseNotify encapsulates Windows system-wide mouse hook functionality.

### ➤ DSAMSG (s): Don't show again services

This provides 'Don't Show Again' dialog and form services. Included is a form class that you can descend your own forms from, routines for showing standard TForm descendants, and replacement routines for the MessageDlg function. DSA services allow the user to specify whether or not they want to see the dialog or form in the future with minimal effort on your part.

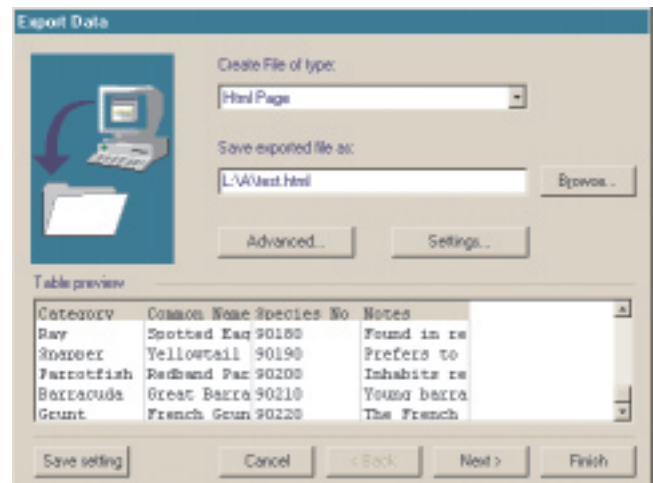
### ➤ DLGTEST (s): Common dialogs at design-time

A component editor that allows testing of the TCommonDialog descendants at design-time. This allows you to set the various options and then view the results without having to compile and run your application.

➤ Right:  
ICONCTLS



➤ Below:  
TDBExport



### ➤ TCOMPLEX (s): Complex maths

TComplex is a component that handles complex arithmetic and the file also contains examples of its use (including Mandelbrot images).

### ➤ GRADPAN (s): Colourful and moveable panels

TGradPan is a TPanel descendant that is moveable and sizeable at runtime, with a gradient background or a stretched/tiled bitmap.

### ➤ DBEXUSTR: Table export

The TDBExport component allows the user to export any table or query. You can configure the output file using the wizard, choosing the type of file you want (variable, fixed, dBase, Paradox or HTML), the separator character, the fields you want, the ordering of the fields and many other settings.

### ➤ Send In Your Code...

If you have some carefully crafted routines send them in for evaluation to Mike Orriss, our Disk Editor, at mjo@3kcc.co.uk. We do consider all files submitted.